

AVNON TODAY



Preparing First Responders

SKYLOCK anti-drone system for VIP and site protection.

Mobile VIP Cyber Protection

SMART POLICE - ARE YOU WORKING IN THE 21ST CENTURY?



SMART MANAGEMENT - TRAFFIC POLICE FORCE MODERNIZATION

With over 50% of the worlds' population residing in cities, one of the biggest challenges of the 21st Century is the effective management of inner-city environments and effective policing.

Smart Policing or Predictive Policing is now a hot subject, as National Police Forces worldwide are beginning to understand that the criminal and terror organisations are using more updated technology than their officers and the days of the "Bobby" walking the beat is a thing of the past.

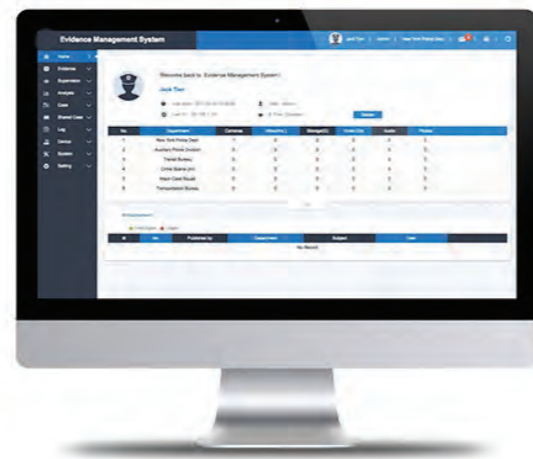
TAR'S EVIDENCE MANAGEMENT SYSTEM

TAR's Evidence Management System allows officers the ability to rapidly review all media that was uploaded by the BWC. The system allows categorization, search by keywords/officer's name/department/area of record.

You can add text, description and anything else in the recorded file, share a segment with other personnel or export it for use in court.

Today, Police Forces need transparency, modern technologies for predictive policing, target tracking/profiling, crime recording and reporting systems.

In this edition of Avnon Today, we will be looking at some of the latest technologies that will support your police force and allow them to maximise their time and resource effectively



MOBILE ANPR

Uses up to four (4) dual-lens LPR cameras, each with integrated Digital Signature Processors (DSP), and advanced imaging and recognition algorithms to provide the most advanced mobile LPR system available.



EXCLUSIVE FEATURES & UNMATCHED EASE OF USE

Featuring large buttons, visual system status indicators, scrolling plate history, and a Day/Night mode to eliminate brightness in the vehicle during nighttime operations for officer safety, Mobile LPR provides a user-friendly interface and experience, enabling Plate recognition and plate reach accuracy allowing officers to gain immediate productivity and improve enforcement with very little training.

DOPLER SPEED TRAP

The advanced model of Doppler-based radar speed camera is designed for in-car applications and ranks among the most widespread and popular speed enforcement solutions. Provides comfort for patrolling staff, allowing them to measure speed of traffic while driving or when parked.



TRANSFORMING INVESTIGATIONS

Body worn cameras are changing the face of the investigation and prosecution process.

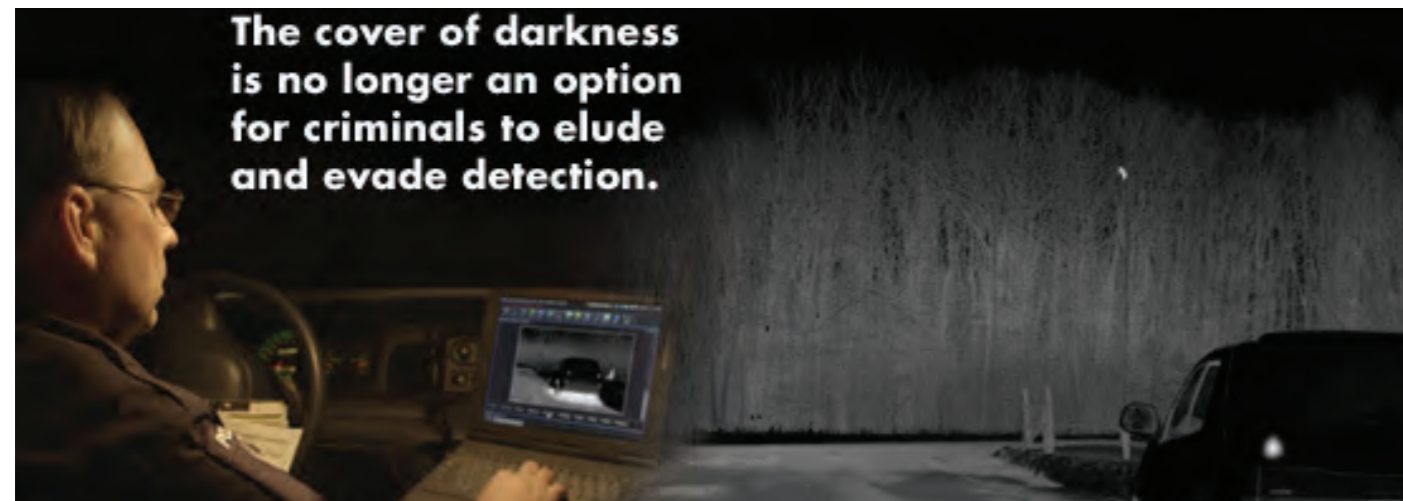
- Reduction of attacks and anti-social behaviour to police officers
- Recorded evidence resulting in increased guilty pleas and lower judiciary costs.
- Public confidence in the police system is increased
- Less man hours spent on paperwork.

Tar's light weight body worn camera, has encrypted memory, is durable and easily attached to a monitor to record the officer's every move.

When fully integrated with our command center this allows the officers to constantly keep their eyes on the mission.

THERMAL CAMERA

The spotlight mount provides quick pan and tilt capabilities required for successful surveillance. The vehicle mounted thermal imaging camera enables you to conduct quick and easy night vision surveillance with its highly acclaimed panning and tilting capabilities. In addition, the ability to pan and tilt the camera, with the spotlight off, allows for the timely and tactical use of the spotlight. the



THE SYSTEM'S MAIN ADVANTAGES:

- BWC can easily be assigned to any personnel, by a scan of a QR code
- Constant Monitoring of each personnel location
- Immediate live-feed of the personnel's BWC video and Audio, by C&C demand
- One-key activation of live-streaming to the C&C by the personnel
- All data is recorded on the camera and can be extracted for future records and analysis for future preparation.



camera uses passive infrared sensing technology, that is not affected by oncoming headlights.

The camera operates in complete darkness and at temperature extremes of - 40F to 176F. It also has a built-in lens heater that activates automatically at temperatures below 40 degrees F to keep the lens clear of frost and ice.



DISASTER MANAGEMENT - SEARCH & RESCUE

DO YOU NEED TO IMPROVE YOUR PREPAREDNESS?

Lack of coordination, differences in technologies used and lack of communication between the different response units and authorities often leads to ineffective management during a disaster. The continued vulnerability of a country's ability to effectively manage a large-scale disaster, lies primarily with the failure to implement essential lessons learnt from previous large-scale domestic disasters.

COOPERATION

In the past, the lack of coordination among the agencies involved during the response phase, together with the absence of a single command control system and scattered or insufficient communication devices with no interoperability have been highlighted, as contributing factors. A fact that has not significantly improved over the last decade. Amid the chaos, for multiple FR's and authorities to work effectively together, there needs to be an efficient communication network. Where the roles of each First Responder is clearly defined, and across the board, unification of technologies, devices and communication are implemented to ensure interoperability.

METHODOLOGIES AND TRAINING

For the last 30 years, TAR'S experts have been helping governments and First Responders across the globe to implement ground-breaking technologies and improve their effectivity during a large-scale disaster.

As part of our First Response Program, our team of experts will help to create unified national definitions and standards for all crisis and disasters, whether man-made or natural. We provide extensive training and simulation exercises that help to build relationships and facilitate information sharing amongst the different first responders and organisations.

EVENT MANAGEMENT PLATFORM

We will ensure that your first responders are working with next-generation communication technology and traffic management systems to facilitate speedy and effective large-scale evacuations. Since traffic personnel are so often out in the field, improved ability to communicate will facilitate a smoother evacuation process.

RESPONSE CAPACITY

- Do you have contingency plans in effect?
- Do you require mitigation planning assistance?
- Do you have modern system in place?

TAR'S LIVE MANAGEMENT PLATFORM

The TAR Control System Platform is an advanced management solution that brings the events from the ground to the Public Safety Answering Point (PSAP). Real-time information gathered from the field needs to be analysed quickly and efficiently, so that it can be turned in to actionable intelligence.

Our control platform allows dispatchers to automatically receive live streaming and accurate information from the FR's during an event. Together with advanced mapping tools, the call operators can create a clear situational awareness picture of the location and the situation in the field. The incoming data allows the operators to analyse

the live data and make rapid, actionable decisions, allocate resources and evacuation procedures when necessary.

The TAR Control Platform allows the operators to monitor and manage broad areas while prioritising the different response teams and routing calls to the relevant dispatchers rapidly and efficiently.



ANALYSE DATA FOR RESOURCE ALLOCATION

With the use of this platform, the call team have instant access to crucial information. The Control System provides live video at the scene of critical events, and provides dispatchers with the reporters personal details, pinpoint location and reliability ranking.

These details are an essential part of prioritizing calls for service and resource allocation. The live feed from events together with the verified reporter information allows dispatchers to make more effective decisions.

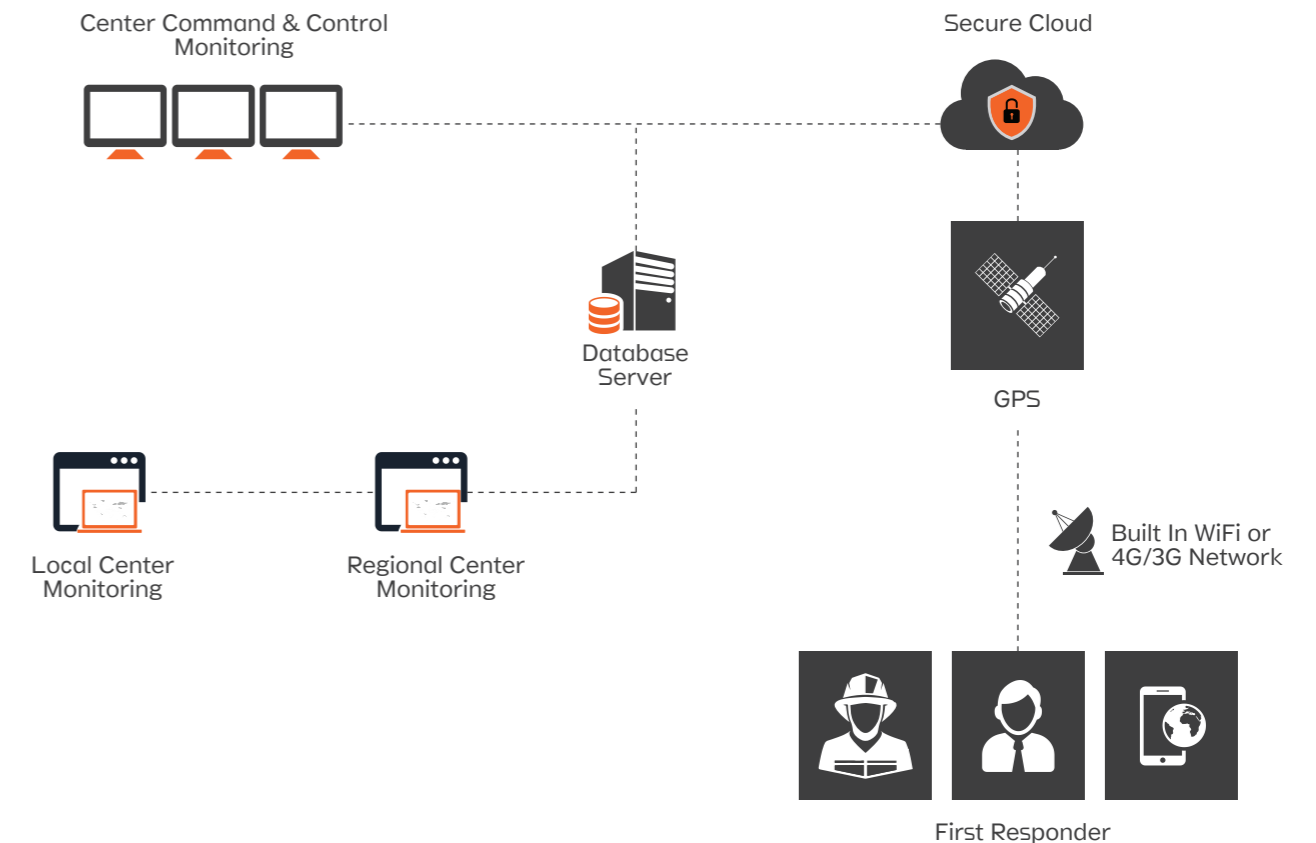


EVENT ARCHIVING

This feature of the system is a key component of the TAR- Live platform, and enables deep diving into the entire status of each event recorded. By navigating between tickets, viewing past events and analysing the profile of each of the records;

decision makers can accurately analyse the past and present behaviour of their callers. This data allows the operator to react accordingly, and in time, predict future patterns. This tool is essential in optimising planning and strategy.

COMMAND & CONTROL SOLUTION





SKYLOCK WINS LARGE VIP PROTECTION PROJECT IN ASIA.

SKYLOCK has just won a large VIP protection project in APAC to supply multiple VIP DOME SYSTEMS that will be placed at strategic sites to provide anti-drone detection and jamming capabilities.

SKYLOCK offers government agencies an integrated counter-drone system featuring passive, selective and active solutions for a variety of drone threats. Over the last year there have been assassination

attempts and drone incursions relating to Presidents and VIP at their residences or during public appearances.

VIP DOME

The VIP DOME system is designed to deliver a portable and easy to use system to neutralize unauthorized drones entering a secured perimeter. It can be used in two modes; Detection and jamming, or automatic jamming.

By using the detection and jamming mode, the system scans for drones using an array of omnidirectional antennas.

Once a threat is detected, the system transmits an automatic command to the jamming unit and blocks all radio communication channels, including GPS signals and video link.

The system detects the general direction of the drone and transmits a beam directly to the drone

that will drift away and lose communication with its operator.



ADVANCED CYBER INTELLIGENCE SOLUTIONS



MOBILE VIP PROTECTION

VIP security is a crucial and delicate operation which requires full coverage and logistics infrastructure to execute comprehensive protection. A combination of tactical and strategic tools are required to ensure the safety of a VIP on the move.

The security details' primary security mission is to detect and respond to all suspicious figures and activities and create a SafeZone.

TACTIC LABS MOBILE VIP INTELLIGENCE

The mobile command control unit is used for intelligence fusion, combining multiple sources from tactical and strategic interception

tools. With over 2.5 billion smartphone users in the world, with the majority of users using a Wi-Fi connection, TACTIC LABS has developed



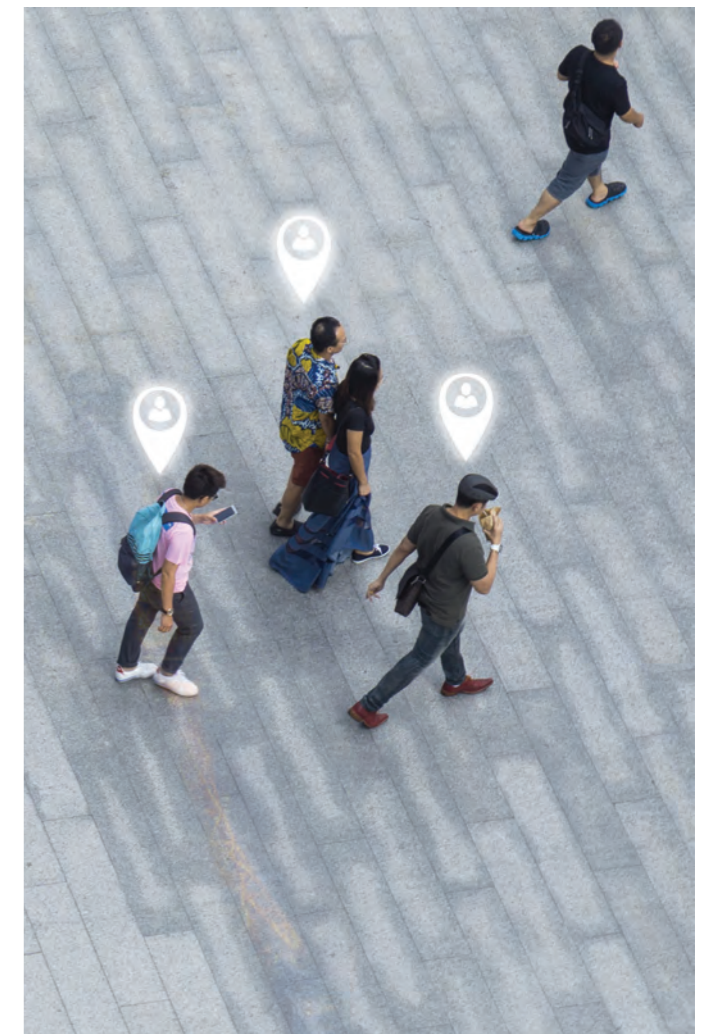
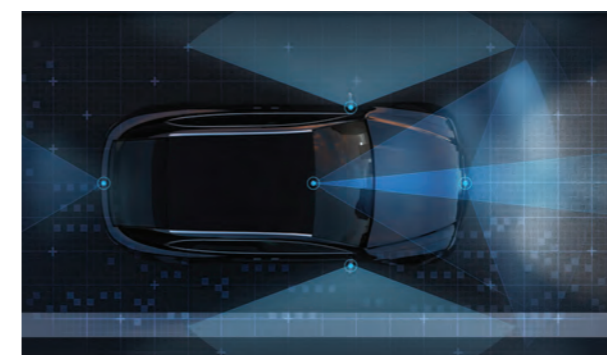
a range of tactical solutions based on Wi-Fi interception, Apps and Cloud interception.

The system allows users to monitor and manage the entire intelligence cycle from a single unified position; from intelligence gathering to research capabilities and advanced intelligence analysis, to active attacks.

Using smart cross-referencing of various intelligence vectors such as Wi-Fi interceptors, Darknet sources and Trojans, the system can alert the user of any pending threats or suspicious activities within or close to the defined SafeZone.

THE VIP SECURITY PLATFORM PROVIDES:

- Suspicious target proximity identification.
- Alerts and tracks targets movements.
- Target surveillance.
- Device mapping according to MAC addresses in the surrounding area.
- Link analysis.
- Unwanted surveillance detection.
- Mapping and manipulating of broadcasted Wi-Fi networks.
- The ability to create target and analyse target profiles.



TACTIC LABS INTELLIGENT VIP CONVOY PROTECTION

TACTICAL VEHICLE

TACTICAL VEHICLE

COMMAND AND CONTROL UNIT

TACTICAL VEHICLE



COMPREHENSIVE CYBER SOLUTIONS

TACTIC LABS provide a fully scalable cyber command control and analysis centre that can evolve into a national-scale centre. Incorporating a wide array of technologies, we create a high-level intelligence platform for intelligence agencies, military and HLS units.

COMMAND & CONTROL

- Researching and investigating any person/organization/threat.
- Collating intelligence from multiple sensors and sources: Wi-Fi Interception, Trojans, city cameras and Darknet activities.
- Powerful analysis tools to analyze the intelligence gathered; pre-defined level and advanced alerts facilitate easy investigation management.
- Search by - Name, Country Code, IMSI, IMEI, URL, MAC, GPS co-ordinates, Date/Time, Type, Text, Number, etc.
- Supports 25 languages



MULTI -TARGET DARKSCAN

- Coverage and immediate notification of specific threats, with zero redundant noise.
- Covering all potential entry points – employee information and credentials, exposed or



misconfigured IT infrastructure, leaked documents and more.

- Research carried out by ex-defense force intelligence experts, using Darknet and sources, ensuring the system monitors only high-value intelligence sources.
- Zero Redundant Noise - General trends, press releases, simple brand protection info, etc.
- Research team continuously discovers and qualifies new sources of information to be monitored.
- System supports more than 100 languages and provides extremely targeted and actionable intelligence.

WI-FI SNIFFERS AND INTERCEPTION

- Automatic Apps & Cloud interception.
- Dashboard for monitoring and managing all targets.
- Automatic attack of Wi-Fi enabled devices in the vicinity, including non-GSM devices such as tablets, computers, printers, Smart TV's, and watches etc.
- Option to run OSINT queries in order to enrich the intelligence.
- Option to run sophisticated software to extract credentials (semi brute force).
- Option to execute advanced attacks such as smart-phishing, smart re- directs and social engineering.
- Automated vulnerability recognition on smartphones and injection of Trojan Horses using researched vulnerabilities (trojan

BLUETOOTH INTERCEPTOR

- Requires no target interaction.
- Collects intelligence from smartphones.
- Target is unaware of when caring the client's security.

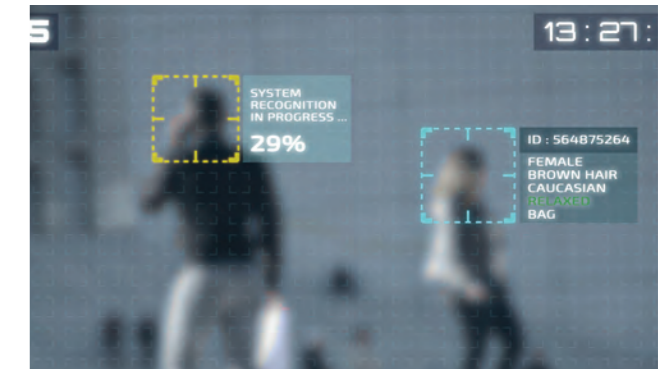
ACIS

- Enables operators to remotely scan, discover and penetrate network devices connected to the internet.
- Supporting devices include modems, cameras, Network Video Recorders (NVR), Digital Network Recorder (DVR) and Wi-Fi routers.
- ACIS provides access to the traffic of the devices connected to routers (i.e. Mobile handsets, PC's, gaming consoles, smart TV's, printers and more).



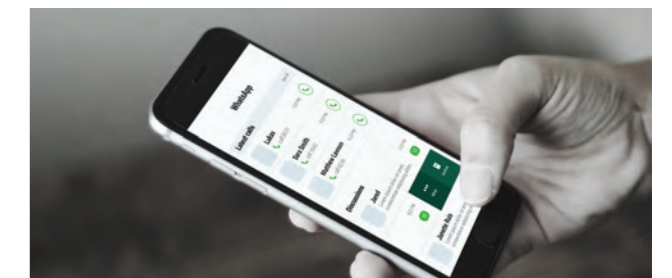
module)

- Trojan Management (trojan module): Includes the use of active and passive functionalities of the trojan; controlling and regulating the leakage of information. A proxy chain facilitates trojan communication with the management server.
- Automated IOS and Android attack including active and passive functionalities.



TROJANS

- Data is integrated into target profile.
- Phone information, media items, messaging, calendar events, contacts, applications and remote actions (pictures, recordings from microphone, GSM conversations).
- Trojans for Android operating system of any version. Extracting basic and personal stored data.
- Trojans for IOS, developed especially for Apple devices. Extracting basic and personal data stored on iCloud.
- Zero click trojan, requiring no target interaction. Injection occurs when the target is browsing a //http (unsecured).



CSF VENTURES.

FIRST TIME'S A CHARM!

CSF Ventures, is the new joint venture between the Avnon Group and JCS Singapore. The technology incubator, for HLS and cyber companies held their first start-up competition on June 4th, 2019 at the ISDEF Expo in Tel Aviv. CSF Ventures is looking for promising Israeli start-ups, in the HLS & cyber sectors.

After the first round of screening, 10 HLS and Cyber related start-ups, were chosen to present their idea before a panel of expert judges from Israel and Singapore. The panel of judges comprised of: Buky Carmeli, Former Head of Israel's National Cyber Agency, Eliran Atias, CEO of 7th Element, Tomer Avnon, partner of CSF and owner of the Avnon Group, Tal Catran-start-up Ecosystem Builder, Yair Golan, Former Deputy Chief of Staff



for the IDF, Dr. Li Wi, General Manager of CSF in Singapore and Justine Zwerling-Head of Primary Markets Israel at the London Stock Exchange.

The three winners will proceed to the next stage for due diligence to ascertain the viability of their ideas. The final winning companies will be given a chance to join the incubator and relocate to Singapore; where they will benefit from business mentoring and an investment of up to a million dollars and a grant of a similar amount.

Naboo took first place- their technology enables tracking transactions across blockchains for suspicious activity, usually associated with money laundering and criminal activity. Using open-source intelligence and feeds from cybersecurity



firms and blockchain events.

2nd place went to INTELLACT, a provider of actionable intelligence solutions that monitor, analyses and accelerates ground handling services.



Leveraging big data and machine learning to provide airlines, airports, and ground handling teams unprecedented real-time visibility into service performance bottlenecks. This gives the operator the ability to address bottlenecks in a proactive and systematic manner yielding significant operational improvements and a dramatic reduction in flight delays.

In 3rd place -Loginno, a start-up that converts standard containers into smart IoT containers that can transmit real-time data and facilitate the shipping container IoT infrastructure. This information provides the logistics chain with data and software products that improve processes.



ISDEF - THE RIGHT TIME THE RIGHT PLACE THE RIGHT PEOPLE



10TH EDITION EXPO – AN INTERNATIONAL CELEBRATION

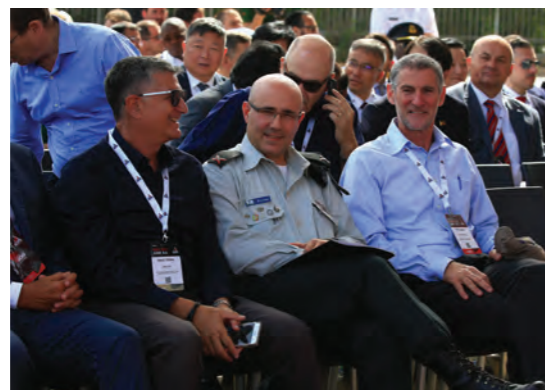
ISDEF has been running for over a decade and each year brings new record in numbers. As Israel's largest international HLS, Cyber and Defense Expo, the show has become an international attraction drawing decision makers and delegations from over 90 countries, that are looking to gain Israeli know-how and operational experience. An astounding 15,000 visitors came to ISDEF, the Range day and SKYLOCK'S demo day this year. In 2018, ISDEF Japan took place in Tokoyo and plans are currently underway to find an international location for the 2020 event. The 12th edition of ISDEF will take place in Tel-Aviv in 2021. Secure your place now.



With global terrorism on the rise globally, more and more governments are looking to strengthen their national security and public safety solutions.

ISDEF had a wide range of innovative HLS and defense solutions that will help companies to thwart terrorism, strengthen borders and enhance public safety. ISDEF organised Israel's first ever Range Day, and the event boasted some of the industry's leading weapon, accessories and ammunition manufacturers.

In addition to the range day, SKYLOCK held a live anti-drone demo, demonstrating the advanced detection and jamming capabilities of the SKYLOCK platform.





WWW.TARIDEAL.COM



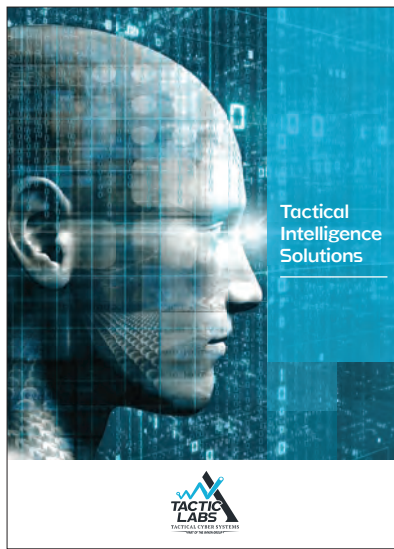
WWW.COMPARTS.COM



WWW.ISDEFEXPO.COM



WWW.AVNONGROUP.COM



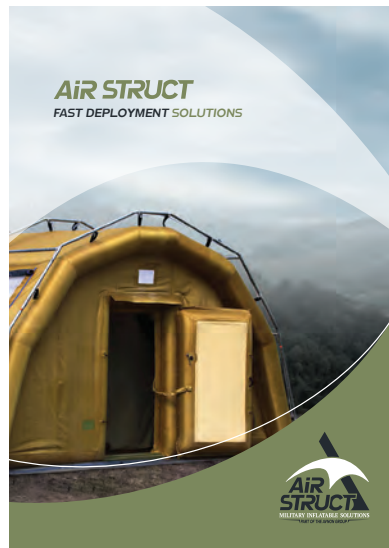
WWW.TACTICSLBS.COM



WWW.SKYLOCK1.COM



WWW.CSF-VENTURES.COM



WWW.AIRSTRUCT1.COM

